



Color palette 2020



1720-DG17 **PAPER WHITE**  
Finish: 200 Diamond Grind  
Sealer: WB Matte



1725-DG17 **TITANIUM WHITE**  
Finish: 200 Diamond Grind  
Sealer: WB Matte



1705-DG17 **WHITE SAND**  
Finish: 200 Diamond Grind  
Sealer: WB Matte



1710-DG17 **EDGEComb GREY**  
Finish: 200 Diamond Grind  
Sealer: WB Matte



1740-DG17 **HOT SPRING STONES**  
Finish: 200 Diamond Grind  
Sealer: WB Matte



1745-DG17 **ALEXANDRIA BEIGE**  
Finish: 200 Diamond Grind  
Sealer: WB Matte



1740-HSN17 **HOT SPRING STONES**  
Finish: HS Natural  
Sealer: WB Matte



1745-HSN17 **ALEXANDRIA BEIGE**  
Finish: HS Natural  
Sealer: WB Matte

\* Color palette may not accurately display physical concrete sample

available for exterior use



1750-DG17 **ASH**  
Finish: 200 Diamond Grind  
Sealer: WB Matte ○



1755-DG17 **HARBOR GRAY**  
Finish: 200 Diamond Grind  
Sealer: WB Matte ○



1760-DG17 **TWILIGHT GREY**  
Finish: 200 Diamond Grind  
Sealer: WB Matte ○



1765-DG17 **BEAR CREEK**  
Finish: 200 Diamond Grind  
Sealer: WB Matte ○



1770-DG17 **DUSK**  
Finish: 200 Diamond Grind  
Sealer: WB Matte



1775-DG17 **IRON MOUNTAIN**  
Finish: 200 Diamond Grind  
Sealer: WB Matte



1750-HSN17 **ASH**  
Finish: HS Natural  
Sealer: WB Matte



1755-HSN17 **HARBOR GRAY**  
Finish: HS Natural  
Sealer: WB Matte



1760-HSN17 **TWILIGHT GREY**  
Finish: HS Natural  
Sealer: WB Matte



1765-HSN17 **BEAR CREEK**  
Finish: HS Natural  
Sealer: WB Matte



1770-HSN17 **DUSK**  
Finish: HS Natural  
Sealer: WB Matte



1775-HSN17 **IRON MOUNTAIN**  
Finish: HS Natural  
Sealer: WB Matte

\* Color palette may not accurately display physical concrete sample

available for exterior use ○



1800-DG17 **CHELSEA GRAY**  
Finish: 200 Diamond Grind  
Sealer: WB Matte



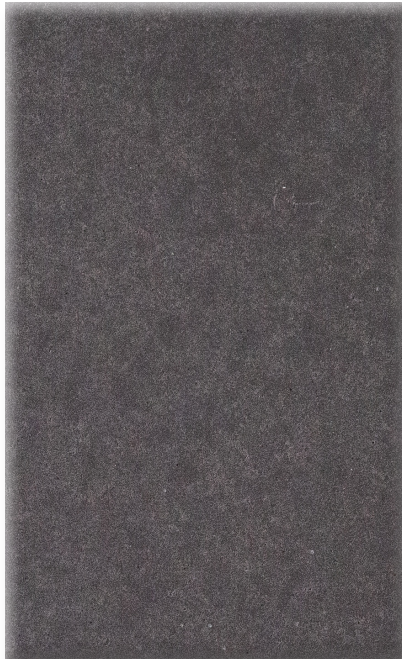
1805-DG17 **CHARCOAL**  
Finish: 200 Diamond Grind  
Sealer: WB Matte



1810-DG17 **STORMY SKY GRAY**  
Finish: 200 Diamond Grind  
Sealer: WB Matte



1815-DG17 **HARD TOPIX BLACK**  
Finish: 200 Diamond Grind  
Sealer: WB Matte



1800-HSN17 **CHELSEA GRAY**  
Finish: HS Natural  
Sealer: WB Matte



1805-HSN17 **CHARCOAL**  
Finish: HS Natural  
Sealer: WB Matte



1810-HSN17 **STORMY SKY GRAY**  
Finish: HS Natural  
Sealer: WB Matte



1815-HSN17 **HARD TOPIX BLACK**  
Finish: HS Natural  
Sealer: WB Matte

\* Color palette may not accurately display physical concrete sample

available for exterior use

# EXPLORE OUR CONCRETE SURFACES

## SET UP A TRAINING TO LEARN MORE

Want to learn more about the different finishes and possibilities of concrete? Give us a call to set up a training at our facility or we can come to you!

Trainings are a great way to educate the design build industry with our unique process and concrete mix. It's not your ordinary concrete so why not equip yourself with the latest and greatest?



The surface has a natural look similar to weathered concrete showing variation and mottling. This finish has an enhanced amount of texture and varied color contrast. Depending on what color you pick, the variation can be more subtle in contrast or it can come out looking more varied and unique. Either way this finish always is a show stopper.

Play with the shape, texture, and color of concrete

Samples should be considered as a representation only of the final product, as color variation, surface character and pinholes are inherent properties of concrete.



The surface is gently ground down to expose small bits of sand aggregate throughout the piece, this finish has personality up close but from afar looks clean and consistent.

\*Outdoor pieces only available in 200 Diamond Grind



sample boxes available  
request yours today!

EDUCATING  
CONSULTING  
SALES  
SUPPORT

samples are produced in a controlled environment. Concrete color pigments and aggregates are natural products and may vary, as well as shape and distribution of aggregates in final product. It is the responsibility of the client to understand and consider these variations in their decision and expectation. Any pinholes, voids, or air pockets that occur during casting are filled. These may be also visible and may not be perfectly smooth to the touch. These variations should be expected and are not considered defects.

# hardtopix



[www.hardtopix.com](http://www.hardtopix.com)  
616-662-9800

6670 Marcan Ave Jenison, MI 49428